

June 30, 2021

Earnings to Average Assets	Peer	Peer	Peer	Peer	Peer	Peer	Peer	Peer	Peer	Peer	Peer
YTD Annualized	<2mm	2-5mm	5-10mm	10-20mm	20-50mm	50-100mm	100-200mm	200-500mm	500mm-1B	GT 1 Billion	ALL FICUs
Investment Yield	0.40%	0.59%	0.72%	0.85%	0.80%	0.81%	0.78%	0.75%	0.78%	0.85%	0.82%
Loan Yield	4.11%	5.84%	4.82%	5.47%	5.42%	4.55%	4.56%	4.33%	4.22%	4.24%	4.31%
Net Loan Yield After NCOs	4.03%	5.55%	4.78%	5.42%	5.34%	4.47%	4.47%	4.22%	4.08%	4.09%	4.17%
Asset Yield	2.10%	3.02%	3.24%	3.42%	3.06%	2.81%	2.87%	2.83%	2.90%	2.95%	2.93%
Cost of Funds	-0.19%	-0.27%	-0.44%	-0.53%	-0.31%	-0.34%	-0.33%	-0.35%	-0.38%	-0.47%	-0.43%
Gross Spread	1.91%	2.75%	2.80%	2.89%	2.75%	2.47%	2.55%	2.48%	2.52%	2.48%	2.50%
Provision Expense	-0.08%	-0.16%	-0.15%	-0.12%	-0.11%	-0.07%	-0.05%	-0.06%	-0.09%	-0.08%	-0.08%
Net Spread after Provision Expense	1.83%	2.59%	2.65%	2.76%	2.64%	2.40%	2.49%	2.42%	2.43%	2.40%	2.42%
Total Non-Interest Income	0.34%	0.54%	1.45%	1.22%	1.23%	1.15%	1.21%	1.34%	1.30%	1.32%	1.30%
Total Non-Interest Expense	-2.44%	-3.38%	-3.32%	-3.56%	-3.42%	-2.99%	-3.15%	-3.10%	-3.02%	-2.64%	-2.80%
Net Operating Expense	-2.09%	-2.84%	-1.87%	-2.34%	-2.20%	-1.84%	-1.95%	-1.76%	-1.72%	-1.32%	-1.50%
Non-Operating Gains (Losses)	0.20%	0.20%	0.07%	0.03%	0.05%	0.06%	0.06%	0.06%	0.07%	0.10%	0.09%
OTTI Losses Recognized in Earnings	0.00%	0.00%	0.00%	0.00%	0.00%	0.00%	0.00%	0.00%	0.00%	0.00%	0.00%
NCUSIF Stabilization Expense	0.00%	0.00%	0.00%	0.00%	0.00%	0.00%	0.00%	0.00%	0.00%	0.00%	0.00%
NCUSIF Recovery/Pass-back	0.00%	0.00%	0.00%	0.00%	0.00%	0.00%	0.00%	0.00%	0.00%	0.00%	0.00%
Return on Assets (ROA with Provision for LL)	-0.06%	-0.06%	0.85%	0.45%	0.49%	0.62%	0.60%	0.73%	0.79%	1.17%	1.01%
Net Charge-Offs	-0.08%	-0.29%	-0.04%	-0.06%	-0.08%	-0.08%	-0.09%	-0.11%	-0.13%	-0.15%	-0.14%
ROA without Annualizing Non-Recurring Items	-0.14%	-0.14%	0.67%	0.45%	0.43%	0.55%	0.52%	0.66%	0.76%	1.12%	0.95%
Return with Net Charge-Offs instead of Provision	-0.07%	-0.19%	0.96%	0.52%	0.53%	0.61%	0.56%	0.68%	0.74%	1.10%	0.95%
Non-Interest Expense to Average Assets											
Employee Compensation and Benefits	-1.16%	-1.81%	-1.84%	-1.87%	-1.74%	-1.45%	-1.58%	-1.58%	-1.57%	-1.41%	-1.47%
Travel and Conference Expense	-0.01%	-0.01%	-0.01%	-0.01%	-0.02%	-0.02%	-0.02%	-0.02%	-0.02%	-0.01%	-0.01%
Office Occupancy Expense	-0.15%	-0.15%	-0.20%	-0.21%	-0.23%	-0.19%	-0.21%	-0.20%	-0.21%	-0.17%	-0.18%
Office Operations Expense	-0.64%	-0.73%	-0.67%	-0.71%	-0.64%	-0.59%	-0.58%	-0.60%	-0.58%	-0.49%	-0.52%
Educational and Promotional Expense	-0.01%	-0.02%	-0.07%	-0.08%	-0.08%	-0.09%	-0.09%	-0.10%	-0.10%	-0.10%	-0.10%
Loan Servicing Expense	-0.08%	-0.10%	-0.20%	-0.20%	-0.22%	-0.21%	-0.22%	-0.22%	-0.21%	-0.20%	-0.20%
Professional and Outside Services	-0.20%	-0.41%	-0.25%	-0.33%	-0.41%	-0.36%	-0.37%	-0.30%	-0.26%	-0.20%	-0.24%
Member Insurance	-0.02%	-0.01%	-0.01%	0.00%	0.00%	0.00%	0.00%	0.00%	0.00%	0.00%	0.00%
Operating Fees (Exam. and/or Supervision Fees)	-0.02%	-0.03%	-0.02%	-0.02%	-0.02%	-0.02%	-0.02%	-0.02%	-0.02%	-0.01%	-0.01%
Miscellaneous Operating Expenses	-0.14%	-0.10%	-0.07%	-0.12%	-0.07%	-0.06%	-0.06%	-0.06%	-0.06%	-0.06%	-0.06%
Total Non-Interest Expense	-2.44%	-3.38%	-3.32%	-3.56%	-3.42%	-2.99%	-3.15%	-3.10%	-3.02%	-2.64%	-2.80%
Other Performance Ratios											
Earning Asset Yield	2.21%	2.85%	2.53%	3.29%	2.87%	2.76%	2.69%	2.84%	3.14%	2.99%	2.96%
Average Cost of Funds	-0.23%	-0.32%	-0.38%	-0.59%	-0.34%	-0.38%	-0.34%	-0.37%	-0.43%	-0.51%	-0.47%
FTE Employee / \$million of Loans & Share Drafts	2.21	0.99	0.31	0.27	0.33	0.29	0.30	0.28	0.24	0.18	0.21
Compensation & Benefits / FTE Emp.	\$3,338	\$36,679	\$73,770	\$105,078	\$86,775	\$70,545	\$68,289	\$67,766	\$83,333	\$95,441	\$87,156
Compensation & Benefits / \$million Lns. & S.D.s	\$4,139	\$33,653	\$20,918	\$35,737	\$31,223	\$21,131	\$19,228	\$18,014	\$20,239	\$17,861	\$18,780
Operating Expense / Loans & Share Drafts	-1.99%	-6.53%	-3.61%	-6.72%	-5.93%	-4.35%	-3.91%	-3.58%	-3.92%	-3.38%	-3.60%
Fee Income+Other Oper.Inc. / Loans & Share Drafts	0.56%	1.08%	1.65%	2.00%	1.92%	1.48%	1.39%	1.73%	1.64%	1.71%	1.69%
Net Operating Expense / Loans & Share Drafts	-1.43%	-5.45%	-1.97%	-4.72%	-4.00%	-2.87%	-2.52%	-1.86%	-2.28%	-1.67%	-1.92%
Operating Expense / Operating Revenue	152.88%	114.97%	90.49%	92.03%	90.00%	86.69%	94.09%	79.55%	81.21%	72.44%	76.29%
Total Fixed Assets / Shares & Equity	0.34%	0.47%	1.25%	1.69%	1.95%	2.01%	2.24%	2.28%	2.27%	1.68%	1.84%
Net Loans to Total Shares and Deposits	48.5%	54.1%	70.7%	65.4%	57.2%	60.8%	62.3%	65.8%	70.4%	71.3%	69.4%
Members / FTE Employee	373.89	389.57	396.88	435.49	385.72	383.52	355.03	341.08	355.51	410.24	389.45

June 30, 2021

Balance Sheet Mixes	Peer <2mm	Peer 2-5mm	Peer 5-10mm	Peer 10-20mm	Peer 20-50mm	Peer 50-100mm	Peer 100-200mm	Peer 200-500mm	Peer 500mm-1B	Peer GT 1 Billion	Peer ALL FICUs
ASSETS											
Cash and Cash Equivalents	0.6%	0.6%	1.0%	0.9%	1.2%	1.0%	1.1%	1.1%	0.9%	0.9%	0.9%
Total Investments	60.0%	56.2%	36.2%	41.9%	49.7%	45.7%	41.7%	37.2%	33.0%	33.7%	35.4%
Unsecured Credit Card Loans/Lines of Credit	0.2%	0.3%	1.1%	1.8%	1.4%	1.5%	1.6%	1.8%	1.9%	2.4%	2.2%
All Other Unsecured Loans/Lines of Credit	10.0%	8.1%	2.8%	3.6%	3.0%	2.6%	2.6%	2.5%	2.7%	2.5%	2.6%
Short-Term Small Amount Loans (STS)	0.1%	0.0%	0.0%	0.0%	0.0%	0.0%	0.0%	0.0%	0.0%	0.0%	0.0%
Non-Federally Guaranteed Student Loans	0.1%	0.2%	0.0%	0.3%	0.1%	0.2%	0.2%	0.2%	0.4%	0.3%	0.3%
New Vehicle Loans	8.0%	10.5%	10.6%	8.5%	6.0%	5.8%	6.6%	6.4%	7.0%	7.4%	7.2%
Used Vehicle Loans	15.9%	16.9%	19.7%	15.4%	13.5%	12.6%	14.1%	14.4%	14.5%	12.1%	12.8%
Total 1st Mortgage Real Estate Lns/Line of Credit	0.3%	1.8%	21.6%	18.2%	14.0%	19.6%	19.4%	23.4%	26.8%	29.0%	26.8%
Total Other Real Estate Loans/Lines of Credit	0.1%	0.4%	1.9%	3.4%	3.3%	4.3%	4.2%	4.7%	4.6%	4.4%	4.4%
Leases Receivable	0.0%	0.0%	0.0%	0.4%	0.0%	0.0%	0.1%	0.1%	0.1%	0.4%	0.3%
Total All Other Loans/Lines of Credit to Members	4.2%	3.7%	2.1%	2.3%	4.2%	2.5%	3.5%	3.1%	2.9%	2.8%	2.9%
Other Loans (Purchased or to non-members)	0.0%	0.0%	0.0%	0.1%	0.1%	0.3%	0.1%	0.2%	0.2%	0.5%	0.4%
Total Loans and Leases	38.8%	42.2%	59.9%	54.1%	45.7%	49.3%	52.5%	56.7%	61.1%	61.7%	59.6%
Less: Allowance for Loan & Lease Losses	-1.2%	-0.7%	-0.5%	-0.4%	-0.4%	-0.3%	-0.4%	-0.4%	-0.5%	-0.6%	-0.5%
Net Loans and Leases	37.6%	41.5%	59.4%	53.7%	45.3%	49.0%	52.1%	56.3%	60.6%	61.1%	59.1%
Total Other Assets	1.8%	1.7%	3.3%	3.5%	3.8%	4.3%	5.0%	5.4%	5.5%	4.3%	4.6%
TOTAL ASSETS	100.0%	100.0%	100.0%	100.0%	100.0%	100.0%	100.0%	100.0%	100.0%	100.0%	100.0%
Total Liabilities	2.5%	6.4%	5.3%	6.8%	10.4%	9.1%	6.0%	4.2%	3.3%	3.6%	4.2%
Share Drafts	0.7%	2.9%	18.2%	13.0%	16.6%	15.8%	16.8%	18.9%	19.7%	16.8%	17.2%
Regular Shares	73.5%	64.1%	43.2%	41.4%	39.9%	39.6%	39.0%	36.7%	34.4%	29.7%	32.2%
Money Market Shares	0.1%	1.7%	10.5%	10.9%	10.4%	10.3%	12.3%	14.1%	15.4%	21.5%	18.7%
Share Certificates	3.7%	7.1%	8.3%	13.1%	8.8%	10.9%	11.4%	11.6%	12.4%	13.1%	12.6%
IRA/KEOGH Accounts	0.3%	1.2%	3.3%	3.0%	3.1%	3.7%	4.0%	4.0%	4.0%	4.2%	4.1%
All Other Shares	1.0%	0.6%	0.9%	0.4%	0.9%	0.6%	0.6%	0.8%	0.6%	0.9%	0.8%
Non-Member Deposits	0.9%	0.4%	0.2%	0.8%	0.2%	0.3%	0.2%	0.2%	0.3%	0.3%	0.3%
Total Shares and Deposits	80.1%	77.9%	84.7%	82.7%	79.9%	81.1%	84.4%	86.2%	86.8%	86.5%	85.9%
Total Equity	17.5%	15.7%	10.0%	10.5%	9.7%	9.8%	9.6%	9.7%	9.9%	9.9%	9.9%
TOTAL LIABILITIES, SHARES, AND EQUITY	100.0%	100.0%	100.0%	100.0%	100.0%	100.0%	100.0%	100.0%	100.0%	100.0%	100.0%
Net Worth	17.5%	15.7%	9.9%	10.6%	9.7%	10.0%	9.8%	9.8%	10.1%	10.0%	10.0%
Total Capital (Equity + Allow. for Loan Loss)	18.7%	16.3%	10.5%	10.9%	10.1%	10.2%	10.0%	10.1%	10.4%	10.5%	10.4%
Balance Sheet Growth YTD Annualized											
Total Investments	-64.8%	-9.0%	20.7%	103.5%	24.7%	18.0%	20.9%	15.4%	13.8%	40.3%	32.3%
Total Loans and Leases	-117.7%	-29.8%	29.5%	137.9%	41.7%	-3.2%	-6.1%	-10.3%	-14.5%	9.6%	5.1%
TOTAL ASSETS	-95.7%	-18.1%	26.6%	122.4%	33.0%	5.9%	4.9%	-1.2%	-5.6%	19.1%	14.0%
Total Liabilities	-47.3%	-17.6%	-13.1%	23.8%	15.9%	-14.3%	-2.3%	-11.5%	-30.8%	0.1%	-4.3%
Total Shares and Deposits	-99.8%	-16.1%	31.3%	137.6%	37.0%	9.5%	6.4%	0.2%	-4.1%	20.7%	15.8%
Equity Capital	-78.3%	-27.6%	13.7%	101.5%	21.6%	-2.2%	-2.9%	-9.1%	-8.7%	12.7%	7.6%
TOTAL LIABILITIES, SHARES, AND EQUITY	-95.7%	-18.1%	26.6%	122.4%	33.0%	5.9%	4.9%	-1.2%	-5.6%	19.1%	14.0%

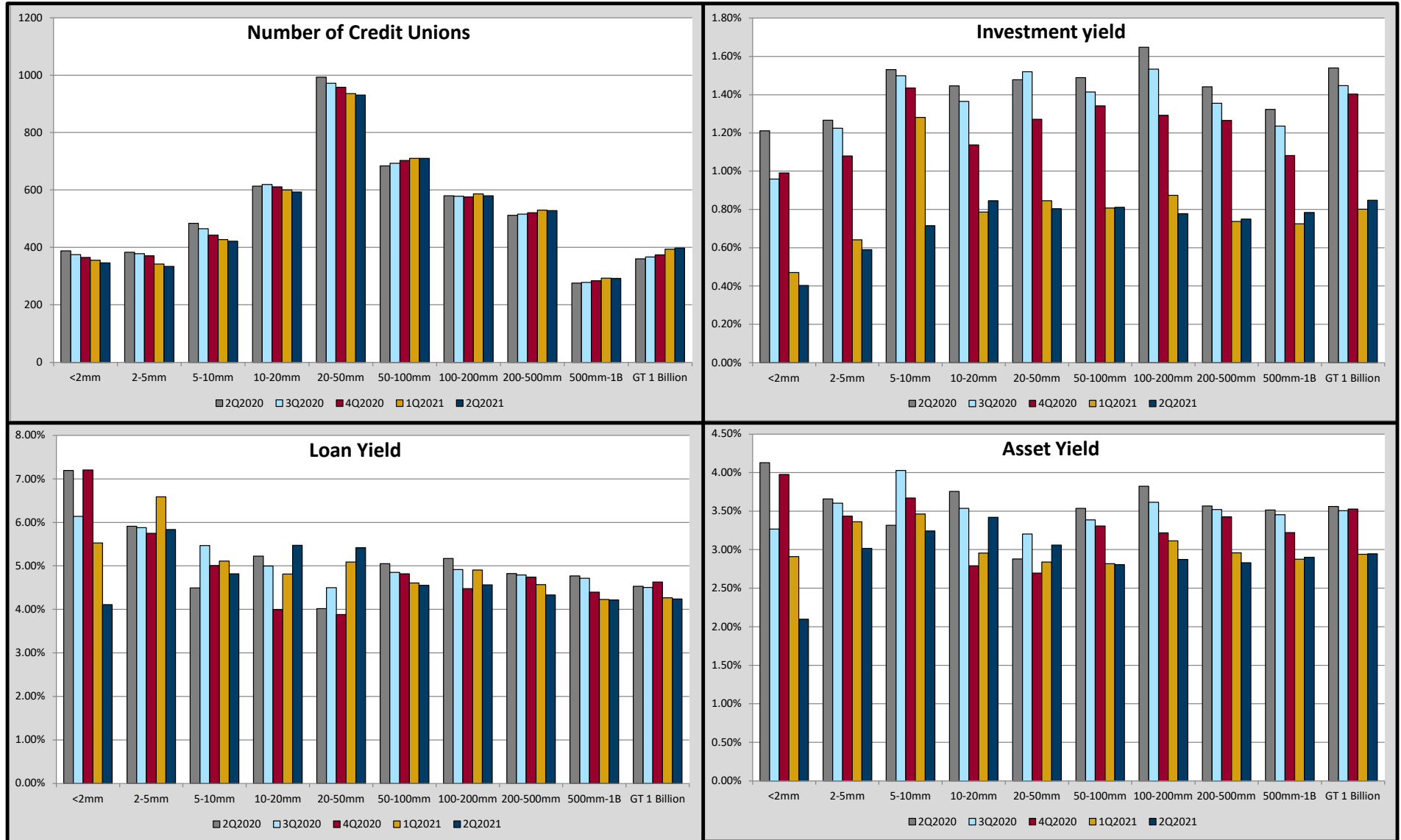
June 30, 2021

Loan Quality	Peer <2mm	Peer 2-5mm	Peer 5-10mm	Peer 10-20mm	Peer 20-50mm	Peer 50-100mm	Peer 100-200mm	Peer 200-500mm	Peer 500mm-1B	Peer GT 1 Billion	Peer ALL FICUs
Delinquent Loans / Net Loans	2.64%	1.39%	0.26%	0.24%	0.39%	0.36%	0.41%	0.42%	0.42%	0.44%	0.43%
Delinquent Loans / Total Capital	5.5%	3.6%	1.5%	1.2%	1.8%	1.8%	2.1%	2.4%	2.5%	2.6%	2.5%
Delinquent Loans + OREO / Net Loans + OREO	2.7%	1.4%	0.3%	0.3%	0.5%	0.4%	0.5%	0.5%	0.5%	0.5%	0.5%
Delinquent Loans > 6mo / Delinquent Loans	48.7%	40.0%	35.0%	36.2%	36.4%	34.4%	35.7%	38.5%	37.8%	38.3%	38.0%
Allowance for Loan Losses/Net Loans	3.30%	1.63%	0.87%	0.70%	0.88%	0.71%	0.74%	0.75%	0.83%	0.94%	0.89%
Loans 2 to less than 6 months Delinquent (\$000s)	\$5	\$13	\$21	\$35	\$60	\$121	\$232	\$486	\$1,114	\$5,198	\$577
Loans 6 to less than 12 months Delinquent (\$000s)	\$3	\$5	\$7	\$11	\$19	\$33	\$60	\$147	\$303	\$1,607	\$174
Loans 12 months and over Delinquent (\$000s)	\$2	\$4	\$4	\$9	\$15	\$31	\$69	\$157	\$375	\$1,624	\$180
Total Delinquent Loans (\$000s)	\$10	\$22	\$33	\$55	\$94	\$185	\$361	\$790	\$1,792	\$8,429	\$931
Delinquency by Category											
Unsecured Credit Card	0.01%	0.06%	0.08%	0.08%	0.19%	0.18%	0.19%	0.20%	0.23%	0.32%	0.28%
STS Loans	3.61%	4.15%	1.83%	2.05%	1.51%	1.02%	0.65%	0.39%	2.18%	2.64%	2.12%
Non-Federally Guaranteed Student Loans	0.00%	0.00%	0.32%	0.01%	0.35%	0.54%	0.47%	0.94%	1.50%	0.60%	0.74%
New Vehicle Loans	1.65%	0.84%	0.20%	0.19%	0.24%	0.22%	0.18%	0.23%	0.25%	0.23%	0.23%
Used Vehicle Loans	2.39%	1.50%	0.33%	0.36%	0.43%	0.39%	0.41%	0.40%	0.36%	0.33%	0.36%
1st Mortgage Fixed	0.00%	0.26%	1.06%	0.77%	0.59%	0.40%	0.40%	0.33%	0.31%	0.31%	0.32%
1st Mortgage Adj	0.00%	9.90%	1.98%	2.32%	0.95%	0.67%	0.60%	0.54%	0.52%	0.82%	0.76%
Other RE Fixed	3.61%	3.37%	1.58%	1.06%	0.73%	0.63%	0.51%	0.57%	0.56%	0.53%	0.55%
Other RE Adj	0.00%	1.30%	0.59%	0.63%	0.69%	0.61%	0.45%	0.41%	0.40%	0.57%	0.53%
Leases Receivable	0.00%	0.00%	0.00%	0.00%	0.00%	0.00%	0.00%	0.13%	0.16%	0.12%	0.11%
All Other Loans	12.17%	5.45%	2.42%	1.25%	0.91%	1.64%	1.29%	1.58%	1.77%	1.47%	1.50%
Indirect Loans	0.00%	0.00%	1.28%	0.51%	0.83%	0.46%	0.50%	0.40%	0.39%	0.31%	0.34%
Total 1st Mortgage Loans	0.00%	1.76%	1.15%	1.07%	0.67%	0.46%	0.44%	0.38%	0.36%	0.42%	0.42%
MBL Delinquency Rate	0.00%	0.00%	0.00%	0.51%	0.09%	0.25%	0.23%	0.41%	0.35%	0.39%	0.38%
MBL Delinquency as % of Total RE Loans	0.00%	0.00%	0.00%	0.00%	0.00%	0.01%	0.02%	0.06%	0.07%	0.07%	0.07%
YTD Annualized											
Net Charge-Offs / Average Loans (Annualized)	0.16%	0.61%	0.05%	0.11%	0.16%	0.15%	0.16%	0.18%	0.22%	0.24%	0.22%
Recoveries / Charge-Offs	50.90%	27.85%	50.90%	38.29%	39.99%	41.06%	41.62%	43.86%	38.94%	36.04%	37.44%
Expected Charge-Offs / Net Loans	0.59%	0.54%	0.11%	0.16%	0.22%	0.19%	0.21%	0.22%	0.22%	0.22%	0.22%
Provision for Loan Losses/Net Charge-Offs	94.2%	54.2%	399.0%	217.2%	144.5%	90.7%	58.0%	55.3%	66.4%	49.7%	55.6%
Prov. for Loan Losses/Expected Charge-Offs	26.5%	62.2%	194.2%	145.6%	105.1%	71.2%	45.1%	45.2%	66.0%	56.1%	58.0%
Bankruptcies / Net Loans	0.18%	0.40%	0.09%	0.19%	0.25%	0.23%	0.25%	0.29%	0.26%	0.24%	0.25%
Total Amount of Loans Charged-Off (\$000s)	\$2	\$15	\$14	\$29	\$56	\$124	\$254	\$625	\$1,554	\$7,087	\$764
Total Amount of Recoveries (\$000s)	\$1	\$4	\$7	\$11	\$22	\$51	\$106	\$274	\$605	\$2,555	\$286
Net Charge Offs (\$000s)	\$1	\$11	\$7	\$18	\$34	\$73	\$148	\$351	\$949	\$4,533	\$478
Net Charge-Offs by Category											
Unsecured Credit Card Loans	0.00%	0.05%	0.03%	0.08%	0.22%	0.27%	0.33%	0.41%	0.57%	0.91%	0.75%
STS Loans	5.81%	2.97%	2.45%	1.56%	1.56%	-3.21%	3.10%	2.97%	6.03%	5.74%	4.31%
Non-Federally Guaranteed Student Loans	0.00%	0.00%	0.02%	-0.02%	0.15%	0.24%	0.12%	0.28%	0.91%	0.25%	0.34%
New Vehicle Loans	-0.06%	0.04%	0.00%	0.05%	0.07%	0.10%	0.11%	0.17%	0.21%	0.26%	0.22%
Used Vehicle Loans	0.19%	0.10%	0.07%	0.09%	0.24%	0.22%	0.24%	0.24%	0.30%	0.31%	0.29%
Total 1st Mortgage RE Loans/LOC	0.05%	0.00%	0.00%	0.01%	0.01%	0.00%	0.01%	0.01%	0.00%	0.00%	0.00%
Total Other RE Loans/ LOC	0.00%	24.70%	0.03%	0.10%	0.00%	-0.01%	-0.02%	-0.02%	-0.01%	-0.03%	-0.02%
Leases Receivable	0.00%	6.49%	0.00%	0.06%	4.47%	4.86%	0.22%	0.11%	0.15%	0.11%	0.11%
All Other Loans	1.03%	3.01%	0.83%	1.23%	1.04%	-2.39%	-1.13%	-0.34%	-0.24%	-0.20%	-0.24%
Indirect Loans	0.00%	0.00%	0.92%	0.02%	0.17%	0.15%	0.16%	0.14%	0.16%	0.16%	0.16%
Number of Credit Unions in Each Peer Group:	346	334	422	593	931	710	580	528	292	398	5,134

June 30, 2021

Concentration Risk (% of Net Worth)	Peer <2mm	Peer 2-5mm	Peer 5-10mm	Peer 10-20mm	Peer 20-50mm	Peer 50-100mm	Peer 100-200mm	Peer 200-500mm	Peer 500mm-1B	Peer GT 1 Billion	Peer ALL FICUs
Deposits in Commercial Banks, S&Ls, Savings Banks	5.84%	8.28%	8.39%	8.96%	21.52%	14.61%	9.04%	3.61%	1.13%	0.20%	2.34%
Credit Unions - Deposits in and Loans to	1.01%	2.78%	1.88%	2.72%	4.88%	3.23%	2.09%	0.84%	0.39%	0.05%	0.56%
Total Investments in Corporate Credit Unions*	65.92%	81.90%	47.55%	56.10%	91.05%	94.21%	79.83%	53.69%	26.71%	7.27%	23.85%
Marketable Securities	12.79%	43.69%	43.99%	50.41%	111.89%	122.85%	148.56%	173.10%	170.66%	197.35%	181.60%
All Other Investments	134.56%	149.11%	233.11%	257.42%	257.15%	200.83%	159.60%	125.87%	110.56%	116.47%	128.34%
Total Investments	342.76%	358.94%	364.94%	397.30%	511.46%	459.23%	424.15%	378.68%	328.15%	335.38%	353.42%
Unsecured Loans	58.33%	53.98%	39.57%	51.33%	45.79%	41.12%	42.81%	43.24%	46.02%	48.65%	47.21%
Vehicle Loans	136.35%	175.36%	305.61%	227.04%	200.75%	184.36%	210.79%	211.61%	213.23%	194.57%	199.71%
New Vehicle Loans	45.71%	67.29%	107.01%	80.82%	62.25%	58.16%	67.23%	65.34%	69.15%	74.04%	71.68%
Used Vehicle Loans	90.63%	108.07%	198.60%	146.22%	138.50%	126.20%	143.56%	146.27%	144.08%	120.53%	128.03%
Total Real Estate	2.36%	14.46%	237.01%	204.42%	178.23%	239.51%	239.62%	285.81%	312.42%	332.32%	310.92%
1st Mortgage	1.82%	11.60%	217.60%	172.41%	143.94%	196.71%	197.00%	238.25%	266.42%	288.88%	267.45%
1st Mortgage Fxd	1.82%	6.32%	6.06%	14.15%	55.73%	85.78%	129.11%	173.10%	212.68%	236.73%	207.72%
1st Mortgage Adj	0.00%	1.16%	0.67%	3.42%	15.20%	24.61%	35.40%	55.67%	54.89%	68.49%	59.73%
2nd Mortgage	0.30%	2.42%	4.08%	6.54%	21.84%	26.94%	38.03%	46.61%	47.66%	45.72%	43.47%
Closed-End Fxd	0.30%	1.36%	2.28%	3.18%	9.86%	9.60%	14.97%	17.09%	15.50%	11.06%	12.04%
Closed-End Adj	0.00%	0.13%	0.13%	0.31%	0.63%	1.63%	1.39%	1.54%	2.00%	1.50%	1.51%
Open-End Adj	0.00%	0.79%	1.49%	2.48%	10.18%	14.76%	20.34%	27.24%	28.97%	31.90%	28.73%
Open-End Fxd	0.00%	0.14%	0.17%	0.56%	1.18%	0.94%	1.33%	0.74%	1.19%	1.27%	1.18%
Other RE Loans	0.00%	0.00%	0.00%	0.00%	0.00%	0.00%	0.00%	0.00%	0.00%	0.00%	0.00%
Leases Receivable	0.04%	0.06%	0.00%	3.91%	0.02%	0.03%	1.16%	0.64%	0.92%	3.55%	2.63%
All Other Loans/Lines of Credit to Members	23.84%	23.92%	20.76%	21.43%	43.10%	25.48%	35.91%	32.03%	29.14%	27.47%	28.70%
Total Loans	221.77%	269.33%	603.28%	512.60%	470.50%	495.38%	533.91%	577.38%	607.47%	614.34%	595.83%
Indirect Loans	0.00%	0.08%	0.55%	2.36%	12.34%	34.37%	62.62%	106.06%	130.58%	151.32%	129.24%
Percent of Vehicle Loans	0.00%	0.04%	0.18%	1.04%	6.15%	18.64%	29.71%	50.12%	61.24%	77.77%	64.72%
Business Loans	0.30%	1.12%	0.91%	0.87%	4.45%	14.08%	25.63%	42.70%	65.22%	63.33%	55.04%
Participation Loans	0.34%	0.57%	1.00%	1.82%	8.45%	15.45%	26.17%	31.69%	31.28%	20.71%	22.24%
Total Mortgage Exposure**	2.81%	14.73%	238.03%	205.75%	187.19%	262.18%	298.10%	380.64%	426.45%	459.83%	420.76%
Total Real Estate	2.36%	14.46%	237.01%	204.42%	178.23%	239.51%	239.62%	285.81%	312.42%	332.32%	310.92%
RE Business Loans	0.00%	0.56%	0.06%	0.20%	1.63%	5.62%	11.40%	23.59%	45.33%	54.49%	44.11%
Mortgage-Backed Investments	0.46%	0.26%	1.02%	1.33%	8.97%	22.66%	58.48%	94.82%	114.04%	127.51%	109.84%
Federal Agency Securities (Mtg Backed)	0.46%	0.19%	1.02%	1.33%	8.96%	22.58%	58.19%	94.45%	112.95%	123.06%	106.72%
Total Other Mortgage Backed Securities	0.00%	0.08%	0.00%	0.00%	0.01%	0.08%	0.29%	0.38%	1.09%	4.45%	3.12%

June 30, 2021



June 30, 2021

